



STOCK CODE: 603855

NEW PRODUCTS

FROM 2024 TO 2025

NEW



WAROM TECHNOLOGY INCORPORATED COMPANY

BAY51-Q LED Series

Explosion-proof Light Fixtures

Applicable area
Zones 1 & 2; 21 & 22

Explosion-proof certificate

IECEX: applied for

ATEX: applied for

Enclosure

GRP, stands 7J impact, corrosion-proof

Diffuser

Polycarbonate, high light transmission, stands 7J impact

LED driver

Wide voltage input, CC-CV (constant current - constant voltage) output, power factor ≥ 0.95 , with function of distributed current, constant current, surge-proof and anti-electromagnetic interference, and protection against overcurrent, open circuit, and short circuit.

Exposed fastener

Stainless steel

Ambient temperature

$-40^{\circ}\text{C} \sim +45^{\circ}\text{C} / +60^{\circ}\text{C}$

Terminal (Without emergency function)

$3 \times 1.5 \sim 4 \text{mm}^2$ (L+N+PE)

Cable entries

$2 \times \Phi 26$: $2 \times \text{M}25 \times 1.5$ cable glands (DQM-I Ex e, plastic).

Available cable outer diameter

$\Phi 9 \sim \Phi 16$ (mm)

Installation type

X: Ceiling type, B: Wall type, D: Pendant chain type,

G: Pendant pole type, L: Pole type



SMD explosion-proof light source module.

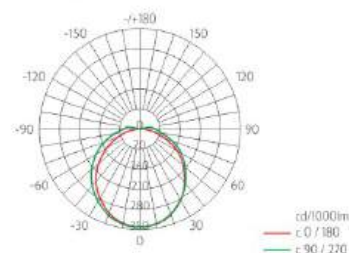


Vaporization diffusion cover.



Explosion-proof signal indicator light module.

Light distribution curve



PRODUCT SELECTION

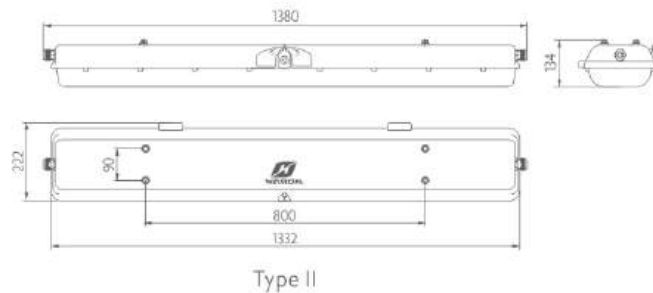
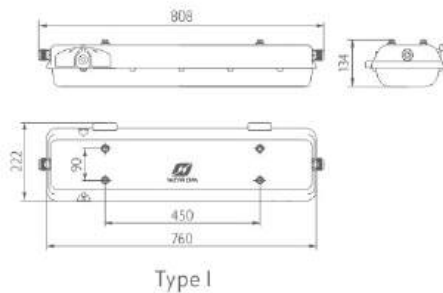
Rated power	Luminous flux	Lamp specification	Rated voltage	Ex-mark	Degree of protection	Type of enclosure
20W	2400lm	SMD LED	100-277V AC 50/60Hz 130-250V DC	Ex db eb mb IIC T6/T5 Gb Ex tb IIIC T80°C Db ⊕ II 2 G Ex db eb mb IIC T6/T5 Gb ⊕ II 2 D Ex tb IIIC T80°C Db	IP66	Type I
40W	5150lm					Type II
60W	9000lm					
80W	10000lm					

EMERGENCY DATA

Special emergency controller and battery pack, with protection against overcharge and overdischarge.

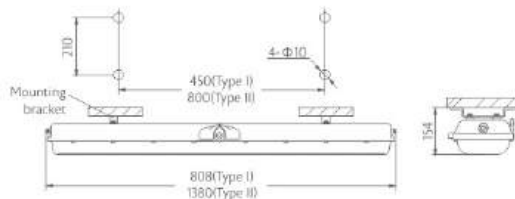
Emergency power (W)	Emergency starting time	Charging time	Emergency lighting time	Terminal
20W×70%	0.3s	24h	90min (180min is optional)	$5 \times 1.5 \sim 4 \text{mm}^2$ (L1+N1+L1'+N1'+PE)
40W×35%				
60W×23%				
80W×18%				

DIMENSION DRAWINGS

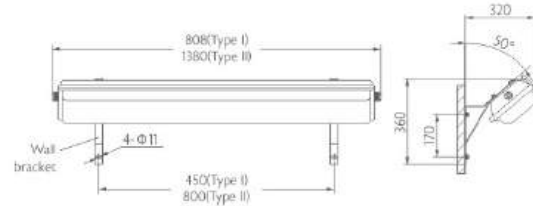


MOUNTING TYPE

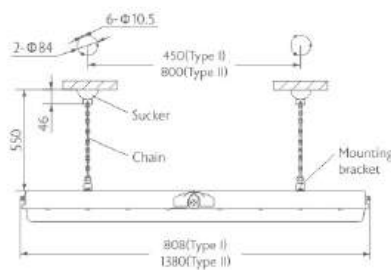
X: ceiling type



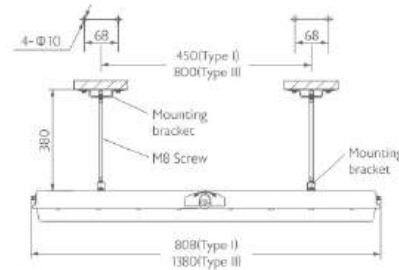
B: wall type



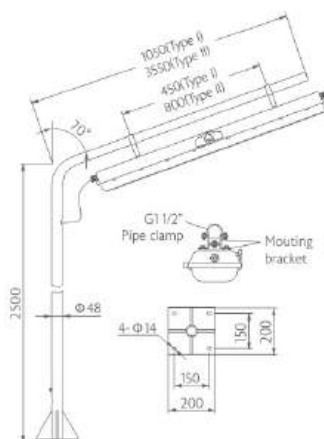
D: pendant chain type



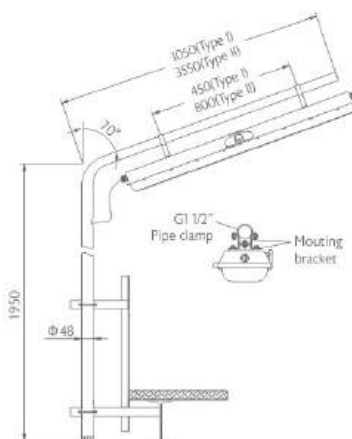
G: pendant pole type



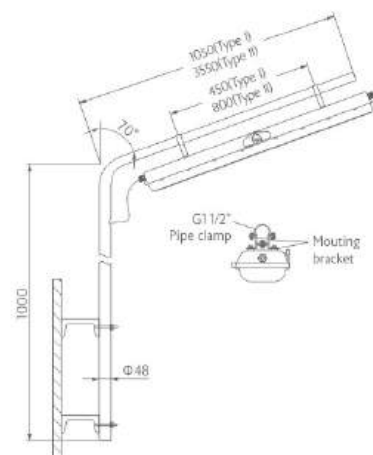
L: pole type (the pole is provided by user)



Suitable for ground pole type



Suitable for fence pole type



Suitable for wall pole type

HRV97 Series

Explosion-proof LED Light Fixtures

Applicable area

Zones 1 & 2; 21 & 22

Explosion-proof certificate

IECEx: IECEx CQM 24.0001X

ATEX: applied for

Enclosure

Copper-free Aluminium Alloy, powder coated surface, yellow (RAL1021)

Diffuser

Polycarbonate, stands 4J impact

LED driver

Wide voltage input, CC-CV (constant current-constant voltage) output, with function of distributed current, constant current, surge-proof and anti-electromagnetic interference, and protection against overcurrent, open circuit, and short circuit.

Exposed fastener

Stainless steel

Ambient temperature

-40°C~+40°C/58°C/+60°C

Terminal (Without emergency function)

3×1.5-4mm² (L+N+PE)

Cable entries

2×M25×1.5 plugs

Installation type

X: Ceiling type, B: Wall type, F: Flange type, H: Fence type

G: Pendant pole type, W: Bend pole type, QT: Derrick-specific type



SMD explosion-proof light source module.

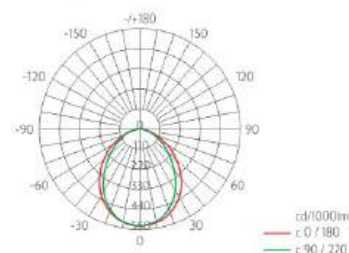


Vaporization diffusion cover.



Explosion-proof signal indicator light module.

Light distribution curve



PRODUCT SELECTION

Rated power	Luminous flux	Lamp specification	Rated voltage	Ex-mark	Degree of protection	Type of enclosure
20W	2500lm	LED module	100-277V AC 50/60Hz 130-250V DC	Ex db eb mb IIC T5/T4 Gb	IP66	Type I
40W	5300lm			Ex tb IIIC T70°C/T90°C Db		Type II
60W	7500lm			Ex II 2 G Ex db eb mb IIC T5/T4 Gb Ex II 2 D Ex tb IIIC T70°C/T90°C Db		Type III

EMERGENCY DATA

Special emergency controller and battery pack, with protection against overcharge and overdischarge.

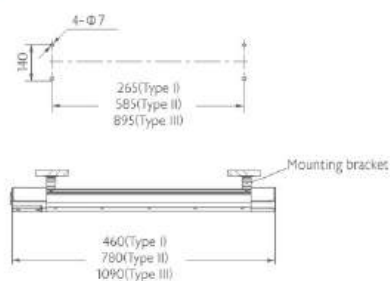
Emergency power (W)	Emergency starting time	Charging time	Emergency lighting time	Ex-mark
20W×70%	0.3s	24h	90min (180min is optional)	Ex db eb mb IIC T4 Gb
40W×35%				Ex tb IIIC T90°C Db Ex II 2 G Ex db eb mb IIC T4 Gb Ex II 2 D Ex tb IIIC T90°C Db

DIMENSION DRAWINGS

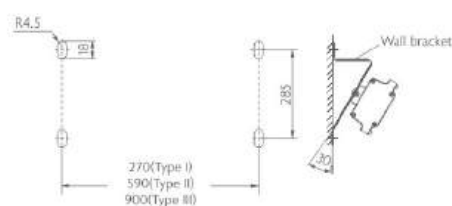


MOUNTING TYPE

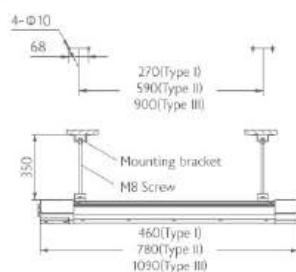
X: ceiling type



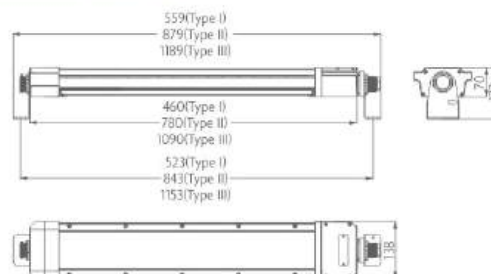
B: wall type



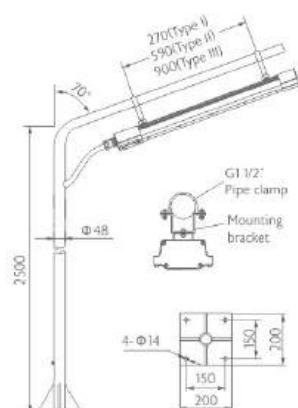
G: pendant pole type



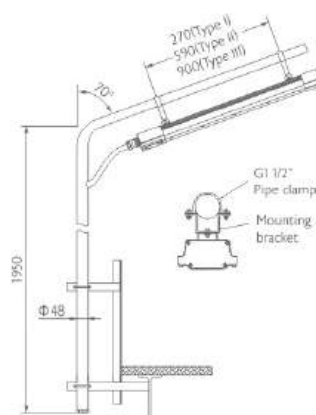
QT: derrick-specific type



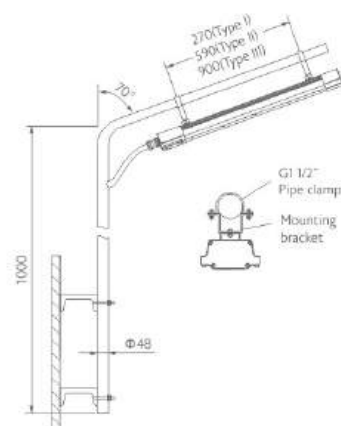
F: flange type



H: fence type



W: bend pole type



HRV51-G/C LED Series

Explosion-proof Light Fixtures

Applicable area

Zones 1 & 2; 21 & 22

Explosion-proof certificate

IECEX: applied for

ATEX: applied for

Enclosure

Stainless steel

Diffuser

Clear polycarbonate, stands 4J impact

LED driver

Wide voltage input, CC-CV (constant current - constant voltage) output, power factor \geq 0.95

Exposed fastener

Stainless steel

Ambient temperature

-40°C~+60°C

Terminal

3 \times 1.5-4mm² (L+N+PE)

Cable entries

4 \times Φ 21; 4 \times M20 \times 1.5 plugs

Installation type

x: ceiling type, g: pendant pole type, b: wall type,

W: bend pole type, f: flange type, h: fence type,

L: pendant chain type



SMD explosion-proof light source module.

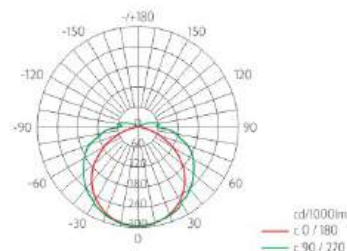


Built-in explosion-proof limit switch.



Explosion-proof signal indicator light module.

Light distribution curve



PRODUCT SELECTION

Rated power	Luminous flux	Lamp specification	Rated voltage	Ex-mark	Degree of protection	Type of enclosure
20W	2500lm	SMD LED	100-277V AC 50/60Hz 130-250V DC	Ex db eb mb IIC T5/T4 Gb Ex tb IIIC T95°C/T130°C Db Ⓔ II 2 G Ex db eb mb IIC T5/T4 Gb Ⓔ II 2 D Ex tb IIIC T95°C/T130°C Db	IP66/IP67	Type I
40W	5300lm					Type II
60W	7500lm					
80W	10000lm					

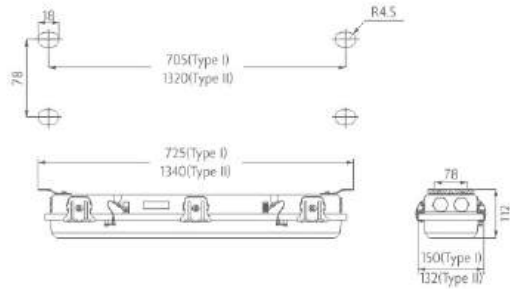
EMERGENCY DATA

Special emergency controller and battery pack, with protection against overcharge and overdischarge.

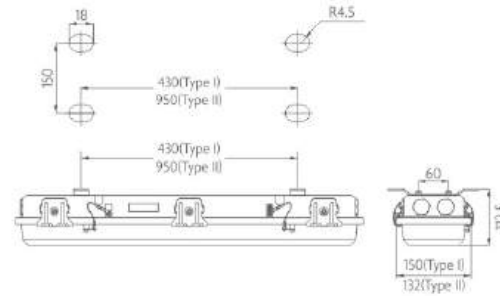
Emergency power (W)	Emergency starting time	Charging time	Emergency lighting time
20W \times 70%	0.3s	24h	90min (180min is optional)
40W \times 35%			
60W \times 23%			
80W \times 18%			

MOUNTING TYPE

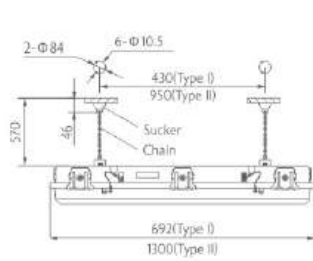
x1: ceiling type 1



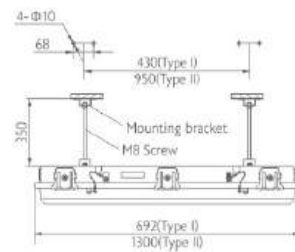
x2: ceiling type 2



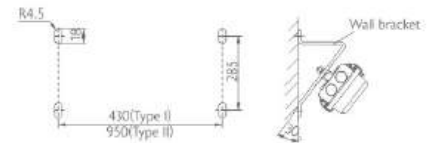
L: pendant chain type



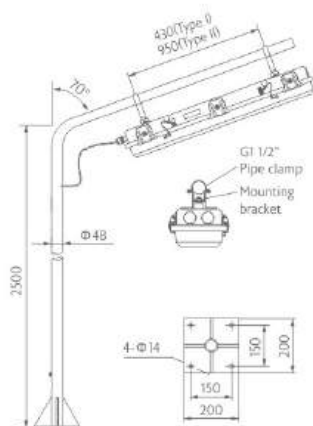
g: pendant pole type



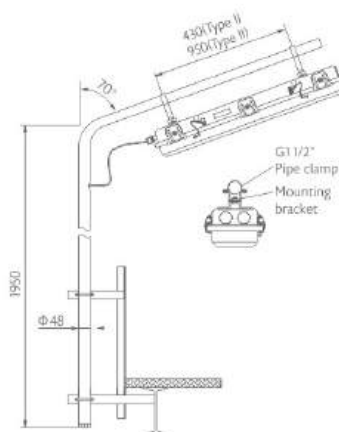
b: wall type



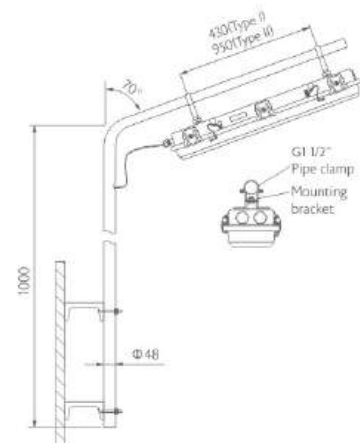
f: flange type



h: fence type



W: bend pole type



BnY81-LED Series

Explosion-proof Light Fixtures

Applicable area
Zones 2; 21 & 22

Explosion-proof certificate

IECEX: applied for
ATEX: applied for

Enclosure

GRP, stands 7J impact, corrosion-proof

Diffuser

Polycarbonate, high light transmission, stands 7J impact, corrosion-proof

LED driver

Wide voltage input, CC-CV (constant current - constant voltage) output, power factor ≥ 0.95 , with function of distributed current, constant current, surge-proof and anti-electromagnetic interference, and protection against overcurrent, open circuit, and short circuit.

Exposed fastener

Stainless steel

Ambient temperature

$-40^{\circ}\text{C} \sim +45^{\circ}\text{C} / +60^{\circ}\text{C}$

Terminal

$3 \times 1.5 \sim 4\text{mm}^2$ (L+N+PE)

Cable entries

$3 \times \Phi 26$: $2 \times \text{M}25 \times 1.5$ cable glands (DQM-I Exe, plastic)
 $+1 \times \text{M}25 \times 1.5$ Plug

Installation type

L: pole type, X: ceiling type, G: pendant pole type,
D: pendant chain type, B: wall type

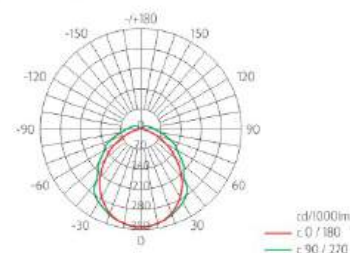


GRP enclosure.



SMD explosion-proof light source module.

Light distribution curve



PRODUCT SELECTION

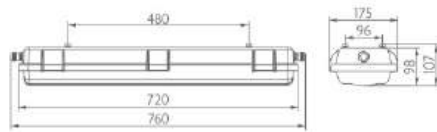
Rated power	Luminous flux	Lamp specification	Rated voltage	Ex-mark	Degree of protection	Type of enclosure
20W	2300lm	SMD LED	100-277V AC 50/60Hz 120-250V DC	Ex ec mb IIC T5/T6 Gc Ex tb IIIC T80°C/T95°C Db Ⓔ II 3 G Ex ec mb IIC T5/T6 Gc Ⓔ II 2 D Ex tb IIIC T80°C/T95°C Db	IP66	Type I
40W	4600lm					Type II
60W	6500lm					Type II

EMERGENCY DATA

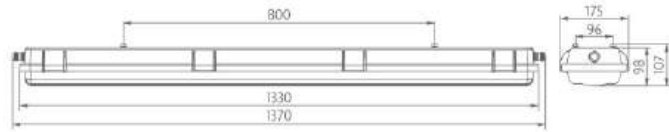
Special emergency controller and battery pack, with protection against overcharge and overdischarge.

Emergency power (W)	Emergency starting time	Charging time	Emergency lighting time
20W×70%	0.3s	24h	120min (180min is optional)
40W×35%			
60W×23%			

DIMENSION DRAWINGS



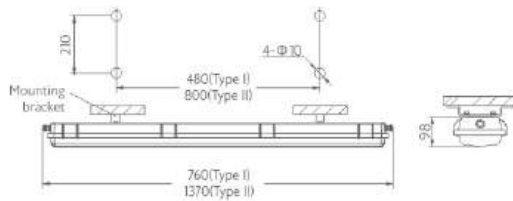
Type I



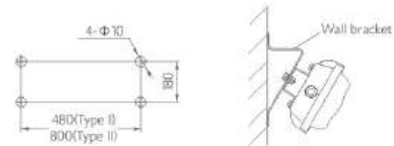
Type II

MOUNTING TYPE

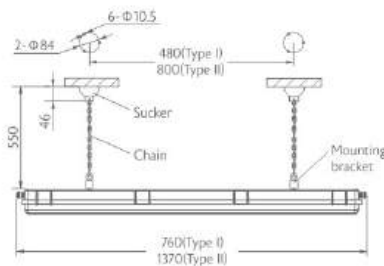
X: ceiling type



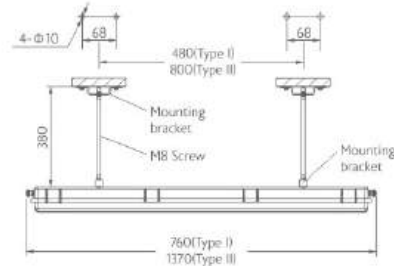
B: wall type



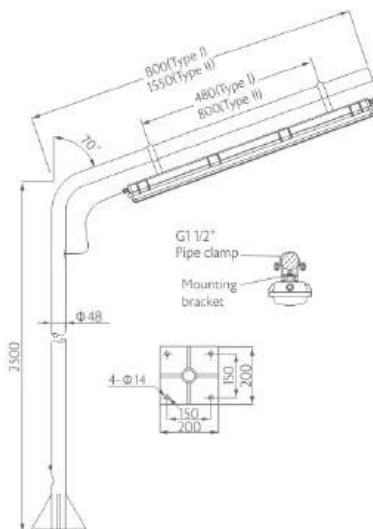
D: pendant chain type



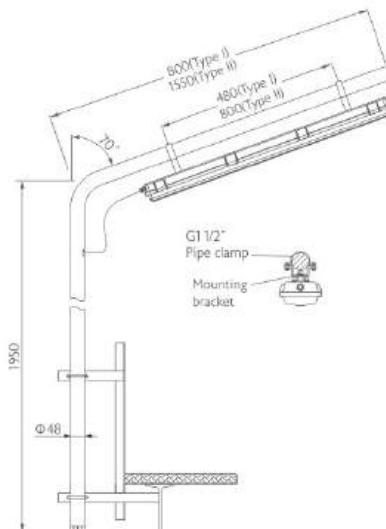
G: pendant pole type



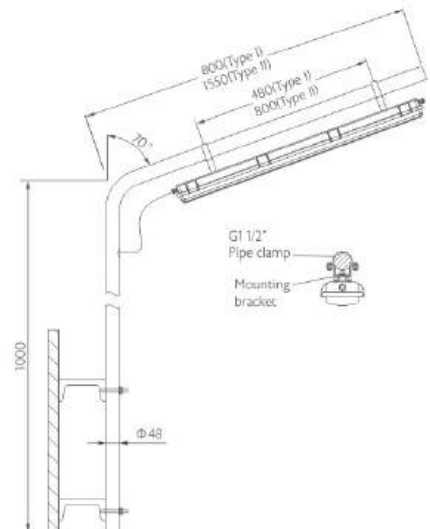
L: pole type (the pole is provided by user)



Suitable for ground pole type



Suitable for fence pole type



Suitable for wall pole type

HRD99 Series

Explosion-proof LED Lightings

Applicable area

Zones 1 & 2; 21 & 22

Explosion-proof certificate

IECEX: applied for

ATEX: applied for

Enclosure

Copper-free Aluminium Alloy, powder coated surface, yellow (RAL1021)

Transparent cover

Polycarbonate, high light transmission, stands 7J impact

Exposed fastener

Stainless steel

Ambient temperature

-40°C~+40°C/+55°C (-60°C is optional)

Terminal

3×1.5~4mm² (L+N+PE)

Cable entries

M25×1.5

Available cable outer diameter

Φ10~Φ14 (mm)

Installation type

X: Ceiling type, G: Pendant type, L: Pole type,

K: Bracket type



Optoelectronic integration technology.

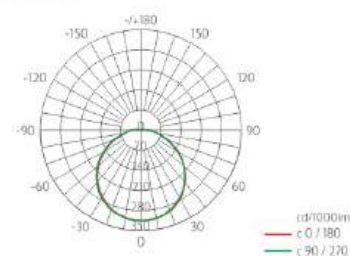


Wireless connectivity device.



Vaporization diffusion cover.

Light distribution curve



PRODUCT SELECTION

Rated power	Luminous flux	Lamp specification	Rated voltage	Ex-mark	Degree of protection	Type of enclosure
30W	3300lm	SMD LED	220~240V AC 50/60Hz	Ex db IIC T6/T5 Gb	IP66	Type I
50W	6500lm			Ex tb IIIC T80°C/T95°C Db		Type II
70W	8700lm			Ex II 2 G Ex db IIC T6/T5 Gb		Type III
100W	11000lm			Ex II 2 D Ex tb IIIC T80°C/T95°C Db		

HRT99 Series

Explosion-proof LED Flood Lights

Applicable area

Zones 1 & 2; 21 & 22

Explosion-proof certificate

IECEX: applied for

ATEX: applied for

Enclosure

Copper-free Aluminium Alloy, powder coated surface, yellow (RAL1021)

Glass cover

Toughened glass, stands 4J impact

Exposed fastener

Stainless steel

Ambient temperature

-40°C~+40°C/+55°C (-60°C is optional)

Terminal

3×1.5~4mm² (L+N+PE)

Cable entries

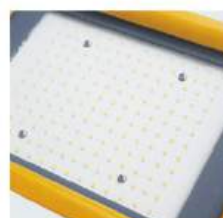
M20×1.5 (M25×1.5 is optional)

Available cable outer diameter

Φ5-Φ10 (mm)

Installation type

B: Bracket type, M: Streetlight type

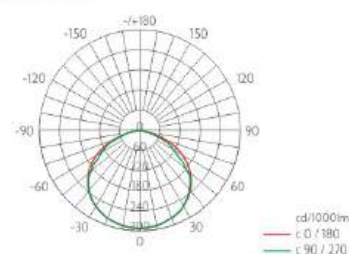


Optoelectronic integration technology.



The professionally designed positioning adjuster allows for precise beam angle adjustment.

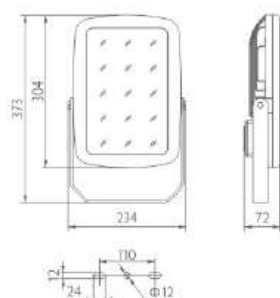
Light distribution curve



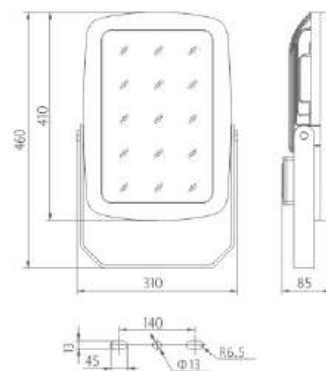
PRODUCT SELECTION

Rated power	Luminous flux	Lamp specification	Rated voltage	Ex-mark	Degree of protection	Type of enclosure
80W	8800lm	SMD LED	220-240V AC 50/60Hz	Ex db eb IIC T5/T6 Gb Ex tb IIIC T80°C/T95°C Db II 2 G Ex db eb IIC T5/T6 Gb II 2 D Ex tb IIIC T80°C/T95°C Db	IP66	Type I
100W	11000lm					Type II
120W	13000lm					
160W	17600lm					
200W	22000lm					
240W	28000lm					

DIMENSION DRAWINGS



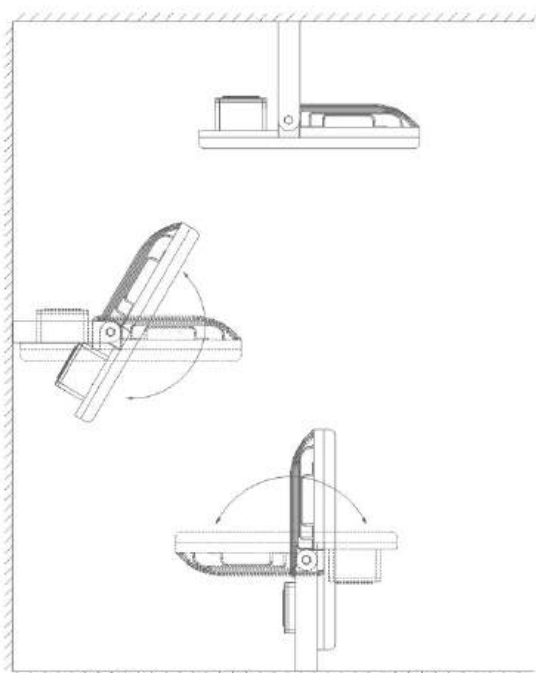
Type I



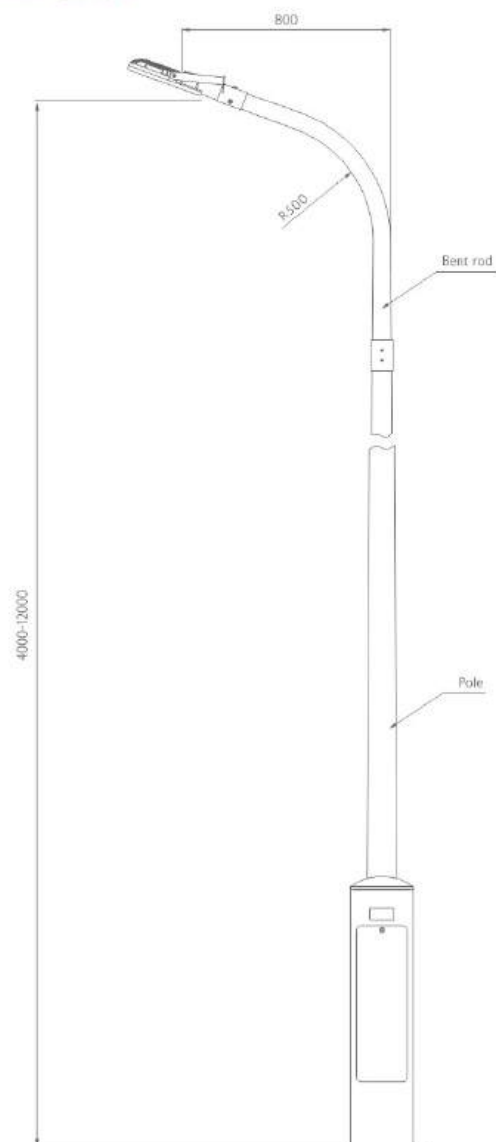
Type II

MOUNTING TYPE

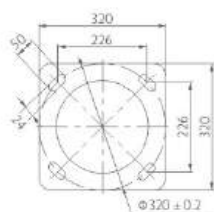
B: Bracket type



M: Street light type



Schematic diagram of street lamp flange



HRND95 Series

Explosion-proof LED Lightings

Applicable area

Zones 1 & 2; 21 & 22

Explosion-proof certificate

IECEX: applied for

ATEX: applied for

Enclosure

Copper-free Aluminium Alloy, powder coated surface.

Glass cover

Toughened glass, stands 4J impact

LED driver

Wide voltage input, CC-CV (constant current - constant voltage) output, power factor \geq 0.95, with function of distributed current, constant current, surge-proof and anti-electromagnetic interference, and protection against overcurrent, open circuit, and short circuit.

Exposed fastener

Stainless steel

Ambient temperature

-40°C~+55°C (-60°C is optional)

Terminal

3 \times 1.5-4mm² (L+N+PE)

Cable entries

1 \times M20 \times 1.5 cable gland (DQM-I Ex e)

(M25 \times 1.5 is optional for 160W, 200W, 240W, 300W)



Optical lenses ensure even distribution of light flux.

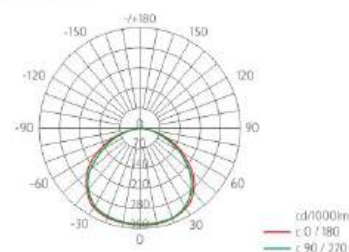


The professionally designed positioning adjuster allows for precise beam angle adjustment.



Unique heat dissipation design ensures long service life of the lamp.

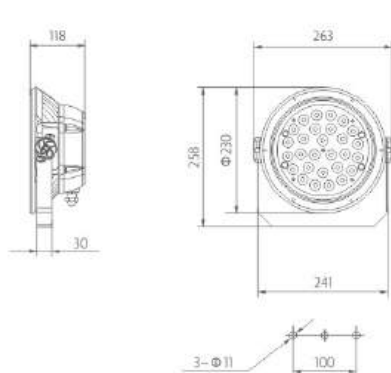
Light distribution curve



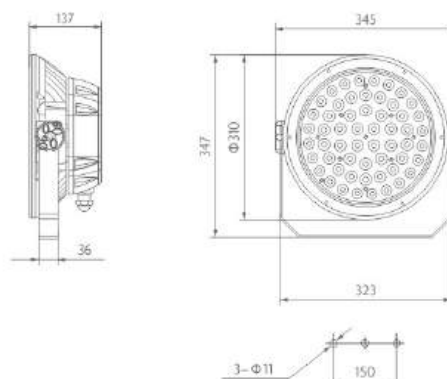
PRODUCT SELECTION

Rated power	Luminous flux	Lamp specification	Rated voltage	Ex-mark	Degree of protection
40W	4800lm	SMD LED	100-277V AC 50/60Hz, 130-250V DC	Ex ec mb IIC T6/T5Gc Ex tb IIIC T80°C/T95°C Db Ex II 3 G Ex ec mb IIC T6/T5Gc Ex II 2 D Ex tb IIIC T80°C/T95°C Db	IP66
60W	7200lm				
80W	9900lm				
120W	15000lm				
160W	19800lm				
200W	22450lm				
240W	28300lm				
300W	37200lm				

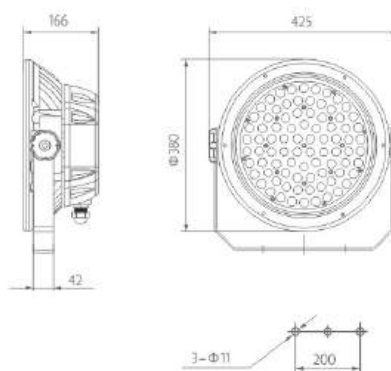
DIMENSION DRAWINGS



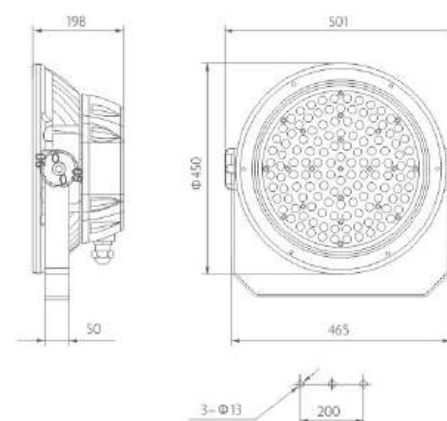
HRND95-40
HRND95-60



HRND95-80
HRND95-120



HRND95-160
HRND95-200



HRND95-240
HRND95-300

ACCESSORIES

Picture	Name	Ordering code	Weight (kg)
	40W/60W Reflector	95001	0.23
	80W/120W Reflector	95002	0.39
	160W/200W Reflector	95003	0.45
	240W/300W Reflector	95004	0.69

HRNT95 Series

Explosion-proof LED Floodlights

Applicable area

Zones 1 & 2; 21 & 22

Explosion-proof certificate

IECEX: applied for

ATEX: applied for

Enclosure

Copper-free Aluminium Alloy, powder coated surface.

Glass cover

Toughened glass, stands 4J impact

LED driver

Wide voltage input, CC-CV (constant current - constant voltage) output, power factor ≥ 0.95 , with function of distributed current, constant current, surge-proof and anti-electromagnetic interference, and protection against overcurrent, open circuit, and short circuit.

Exposed fastener

Stainless steel

Ambient temperature

-40°C~+40°C/+55°C (-60°C is optional)

Terminal

3x1.5-4mm² (L+N+PE)

Cable entries

1xM20x1.5 cable gland (DQM-I Ex e)

(M25x1.5 is optional)



Optical lenses ensure even distribution of light flux.

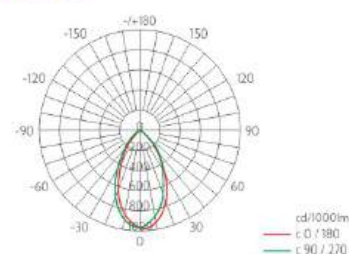


The professionally designed positioning adjuster allows for precise beam angle adjustment.



Unique heat dissipation design ensures long service life of the lamp.

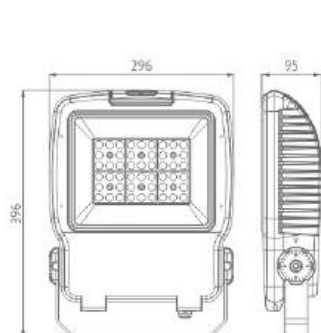
Light distribution curve



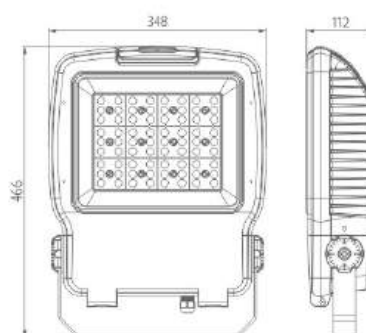
PRODUCT SELECTION

Rated power	Luminous flux	Lamp specification	Rated voltage	Ex-mark	Degree of protection
80W	11200lm	SMD LED	100-277V AC 50/60Hz, 130-250V DC	Ex ec mc IIC T6/T5 Gc Ex tb IIIC T80°C/T95°C Db ⊕ II 3 G Ex ec mc IIC T6/T5 Gc ⊕ II 2 D Ex tb IIIC T80°C/T90°C Db	IP66
120W	16800lm				
150W	21000lm				
200W	28000lm				
240W	33600lm				
300W	42000lm				

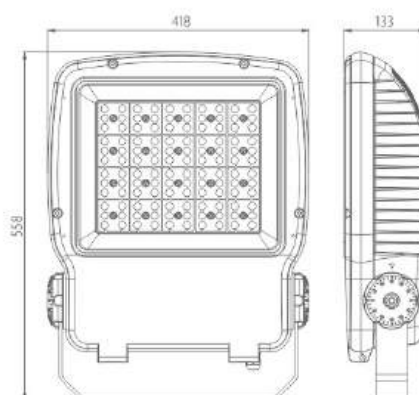
DIMENSION DRAWINGS



HRNT95-80
HRNT95-120



HRNT95-150
HRNT95-200
HRNT95-240



HRNT95-300

ACCESSORIES

Picture	Name	Ordering code	Weight (kg)
	80W/120W Wire guard	95008	0.30
	150W/200W/240W Wire guard	95009	0.40
	300W Wire guard	95010	0.55

HRT97 Series

Explosion-proof LED Floodlights

Applicable area

Zones 2; 21 & 22

Explosion-proof certificate

IECEX: applied for

ATEX: applied for

Enclosure

Copper-free Aluminium Alloy,

powder coated surface.

Transparent cover

Polycarbonate, high light transmission, stands 4J impact

LED driver

Wide voltage input, CC-CV (constant current - constant voltage) output, power factor ≥ 0.95 , with function of distributed current, constant current, surge-proof and anti-electromagnetic interference, and protection against overcurrent, open circuit, and short circuit.

Exposed fastener

Stainless steel

Ambient temperature

-60°C/+40°C/+60°C

Terminal

3x1.5-6mm² (L+N+PE)

Cable entries

M20x1.5 (M25x1.5 is optional)

Available cable outer diameter

Φ5- Φ10 (mm)



Optical lenses ensure even distribution of light flux.

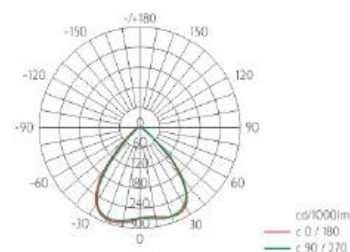


The professionally designed positioning adjuster allows for precise beam angle adjustment.



Unique module design of heat dissipation ensures long service life of the lamp.

Light distribution curve

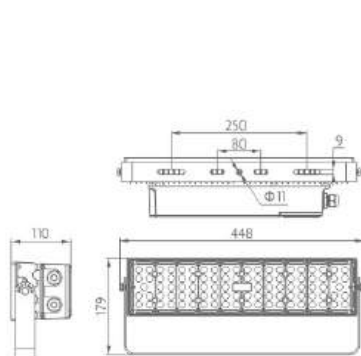


PRODUCT SELECTION

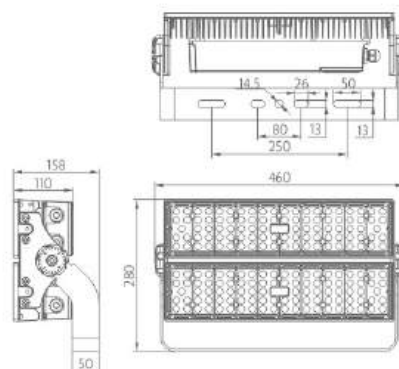
Rated power	Luminous flux	Lamp specification	Rated voltage	Ex-mark	Degree of protection
200W	29000lm	SMD LED	100-277V AC 50/60Hz 130-250V DC	Ex ec mb IIC T5/T4 Gc	IP66
400W	58000lm			Ex tb IIIC T95°C/T130°C Db	
600W	88000lm			Ex II 3 G Ex ec mb IIC T5/T4 Gc	
800W	112000lm			Ex II 2 D Ex tb IIIC T95°C/T130°C Db	
1000W	145000lm				

DIMENSION DRAWINGS

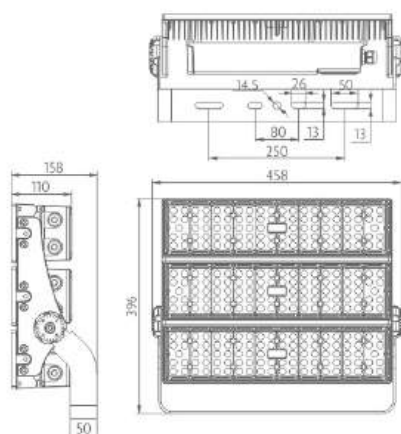
Note: the lamp comes with an installation bracket made of carbon steel, which is coated with plastic powder.



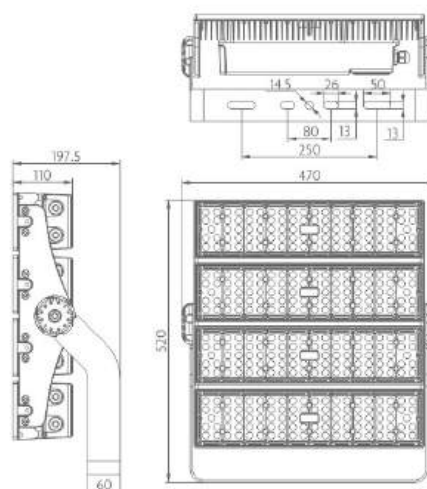
HRT97-200



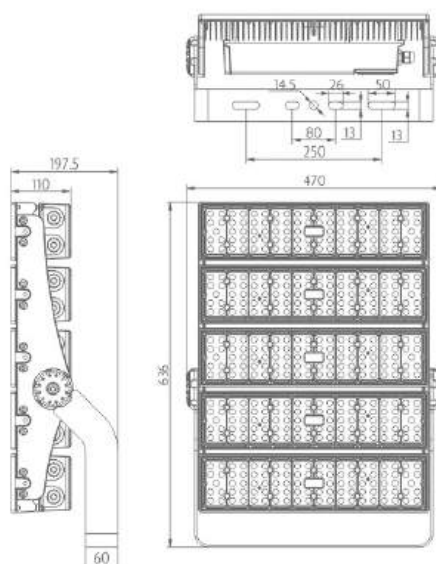
HRT97-400



HRT97-600



HRT97-800



HRT97-1000

BBJ86 Series

Explosion-proof Audio and Visual Caution Spotlight Fittings

Applicable area

Zones 1 & 2; 21 & 22

Explosion-proof certificate

IECEX: applied for

ATEX: applied for

Enclosure

Copper-free Aluminium Alloy, powder coated surface,
yellow (RAL1021)

Transparent cover

Toughened glass, stands 4J impact

Exposed fastener

Stainless steel

Ambient temperature

-40°C~+60°C (-60°C is optional)

Terminal

6×1.5-4mm² (L+N+PE)

Cable entries

2×M25×1.5 plugs

Lamp colour

Sound intensity: 110-120dB (R=1m)



Available in three configurations:
sound and light, light only, or
sound only, to cater to different
scenarios.



The alarm equipped with a
speaker for loud sound
output.

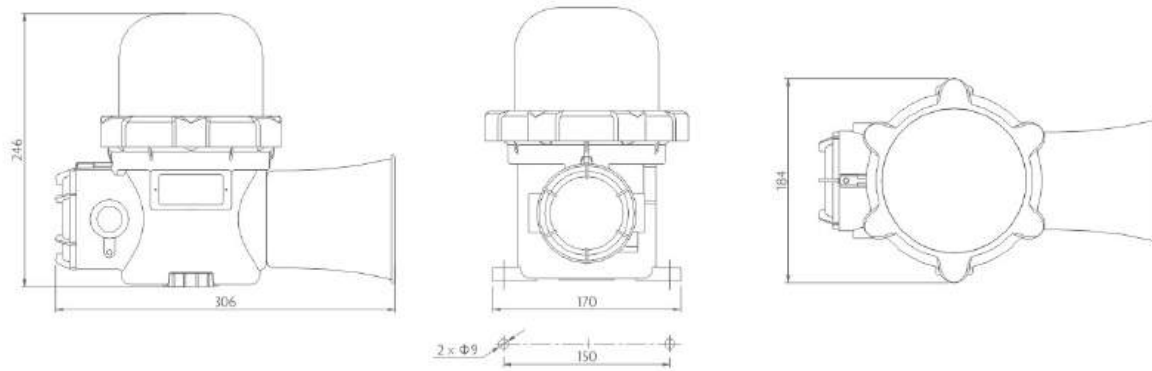


Comes with an external wiring
cavity for easy installation
and maintenance.

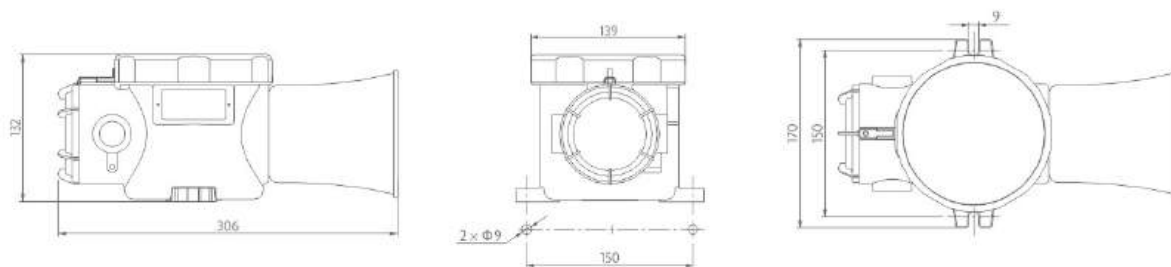
PRODUCT SELECTION

Type	Function	Rated power	Lamp specification	Rated voltage	Ex-mark	Degree of protection
BBJ86-01□	Sound and Light	45W	LED	100-277V AC 50/60Hz 130-250V DC 12-48V AC/DC	Ex db IIC T6 Gb Ex tb IIIC T80°C Db Ex II 2 G Ex db IIC T6 Gb Ex II 2 D Ex tb IIIC T80°C Db	IP66
BBJ86-02□	Sound only	35W				
BBJ86-03□	Light only	10W				

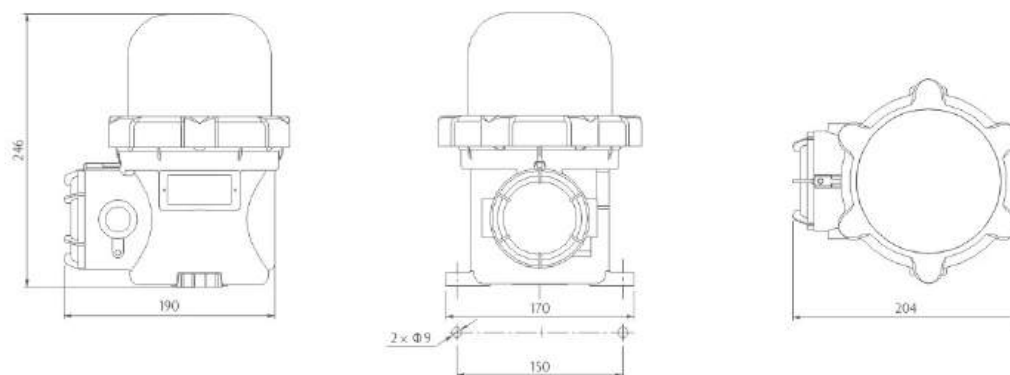
DIMENSION DRAWINGS



BBJ86-01 □ Sound and Light



BBJ86-02 □ Sound only



BBJ86-03 □ Light only

BAYD85 Series

Explosion-proof Emergency Exit Light Fixtures

POWER
8W

Applicable area

Zones 1 & 2; 21 & 22

Explosion-proof certificate

IECEX: IECEX CQM 16.0032X

ATEX: TUV CY 22 ATEX 0206697 X

Ex-mark

Ex db IIB T6 Gb

Ex db IIC T6 Gb

Ex tb IIIC T80°C Db

Ex II 2 G Ex db IIB T6 Gb

Ex II 2 G Ex db IIC T6 Gb

Ex II 2 D Ex tb IIIC T80°C Gb

Enclosure

Copper-free Aluminium Alloy, powder coated surface, yellow (RAL1021)

Glass cover

Toughened glass, stands 4J impact

Exposed fastener

Stainless steel

Ambient temperature

-40°C~+58°C/+60°C (-60°C is optional)

Emergency time

180min

Terminal

3×1.5~2.5mm² (L+N+PE)

Cable entries

2×M25×1.5 plugs

Installation type

G: pendant pole type, X: ceiling type, B: wall type



8w high-power design with clear panel markings.



Equipped with test button and sleep button for easy inspection and maintenance.

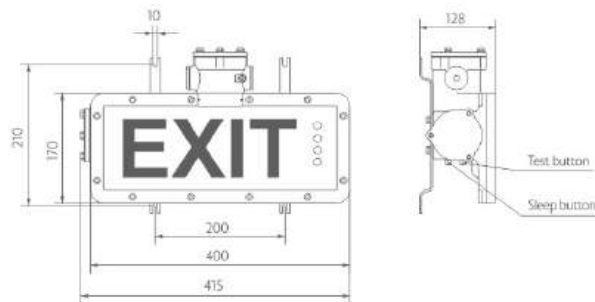


Status indicator for clear working status of the lamp.

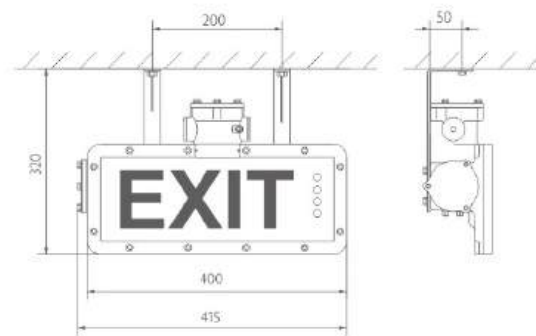
PRODUCT SELECTION

Rated voltage	Ex db IIB T6 Gb	Ex db IIC T6 Gb	Ex tb IIIC T80°C Db	Input power(W)	Degree of protection
100-300V AC 50/60Hz 100-250V DC	-60°C~+58°C	-40°C~+58°C	-60°C~+58°C	8	IP66
12-48V AC/DC	-60°C~+60°C	-40°C~+60°C	-60°C~+60°C	8	
100-300V AC 50/60Hz 100-250V DC 12-48V	-60°C~+60°C	-40°C~+60°C	-60°C~+60°C	4	

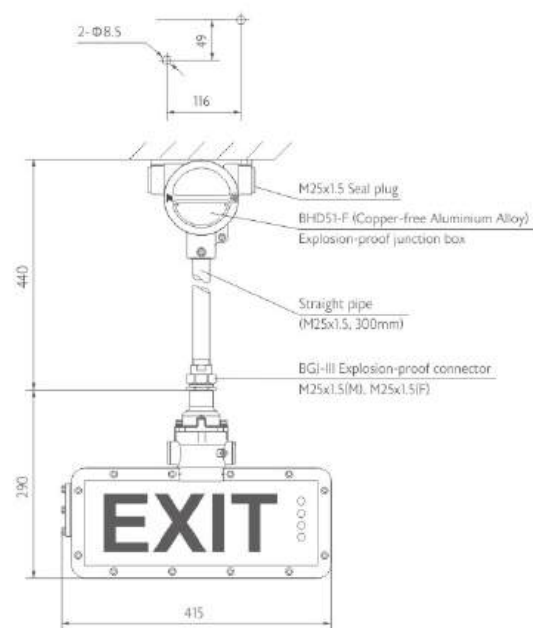
DIMENSION DRAWINGS



BAYD85-B



BAYD85-X



BAYD85-G

BXJ91 Series

Explosion-proof High-Voltage Junction Box

Applicable area

Zones 1 & 2; 21 & 22

Explosion-proof certificate

IECEX: IECEX CQM 24.0021X

ATEX: applied for

Enclosure material

Stainless steel or carbon steel

Exposed fastener

Stainless steel

Internal & external earthing

M8/M8

Ambient temperature

-60°C~+40°C/+60°C

Installation

Vertical type / Pendant type

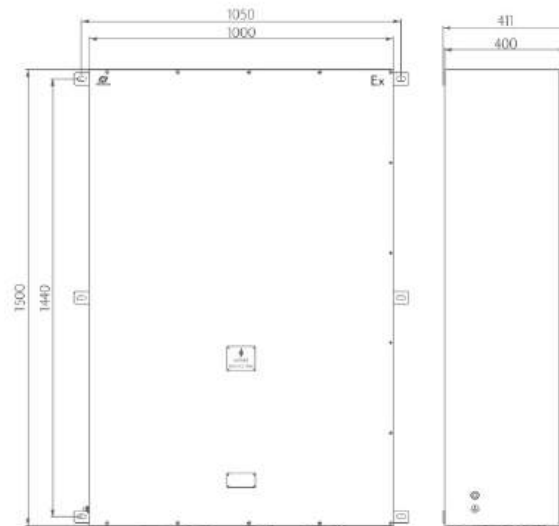


PRODUCT SELECTION

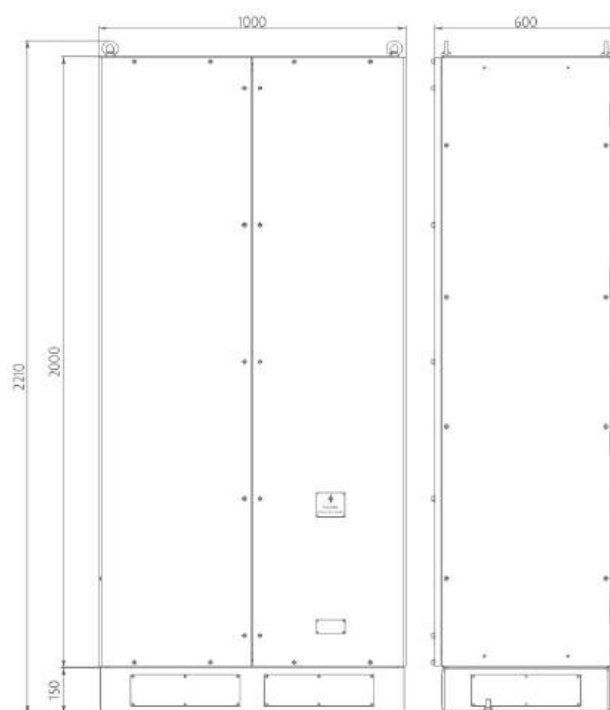
Rated current	Rated voltage	Ex-mark	Degree of protection
Max.800A	Max.11kV AC(eb) Max.15kV AC(ec)	Ex eb IIC T6...T4 Gb Ex ec IIC T6...T4 Gc Ex tb IIIC T80°C Db ⊕ Ex II 2 G Ex eb IIC T6...T4 Gb ⊕ Ex II 3 G Ex ec IIC T6...T4 Gc ⊕ Ex II 2 D Ex tb IIIC T80°C Db	IP66

Conductor (mm²)	Safe carrying capacity (A)	Temp. Class	
		-60°C ≤ Ta ≤ +40°C	-60°C ≤ Ta ≤ +60°C
70	200	T6	T5
95	250		
120	320		
150	350		
185	400		
240	500	T5	T4
300	630		
400	800		

DIMENSION DRAWINGS



BXJ91-I/□/□



BXJ91-II/□/□

BXJ92 Series

Explosion-proof High-Voltage Junction Box

Applicable area

Zones 1 & 2; 21 & 22

Explosion-proof certificate

IECEX: IECEX PCET 24.0011X

ATEX: applied for

Enclosure material

Stainless steel or carbon steel

Internal & external earthing

M8/M12

Ambient temperature

-60°C~+60°C

Exposed fastener

Stainless steel

Installation

A: Vertical type, B: Pendant type



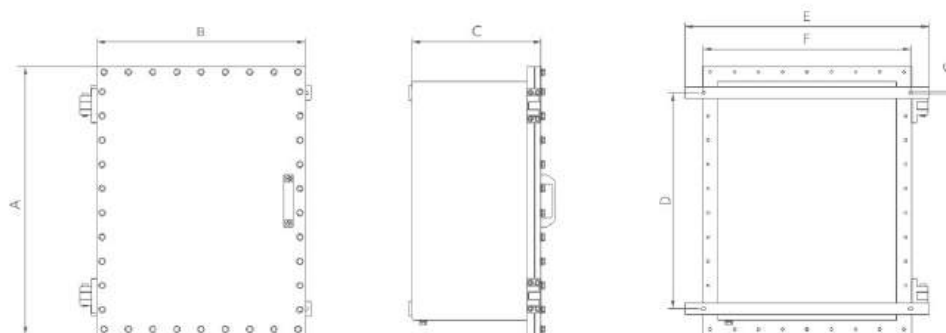
PRODUCT SELECTION

Type	Rated current	Rated voltage	Ex-mark	Degree of protection
BXJ92-I	Max. 400A	Max. 24kV AC	Ex db IIB T6...T5 Gb Ex tb IIIC T80°C...T95°C Db	IP66
BXJ92-II	Max. 800A	Max. 35kV AC	Ex II 2 G Ex db IIB T6...T5 Gb Ex II 2 D Ex tb IIIC T80°C...T95°C Db	

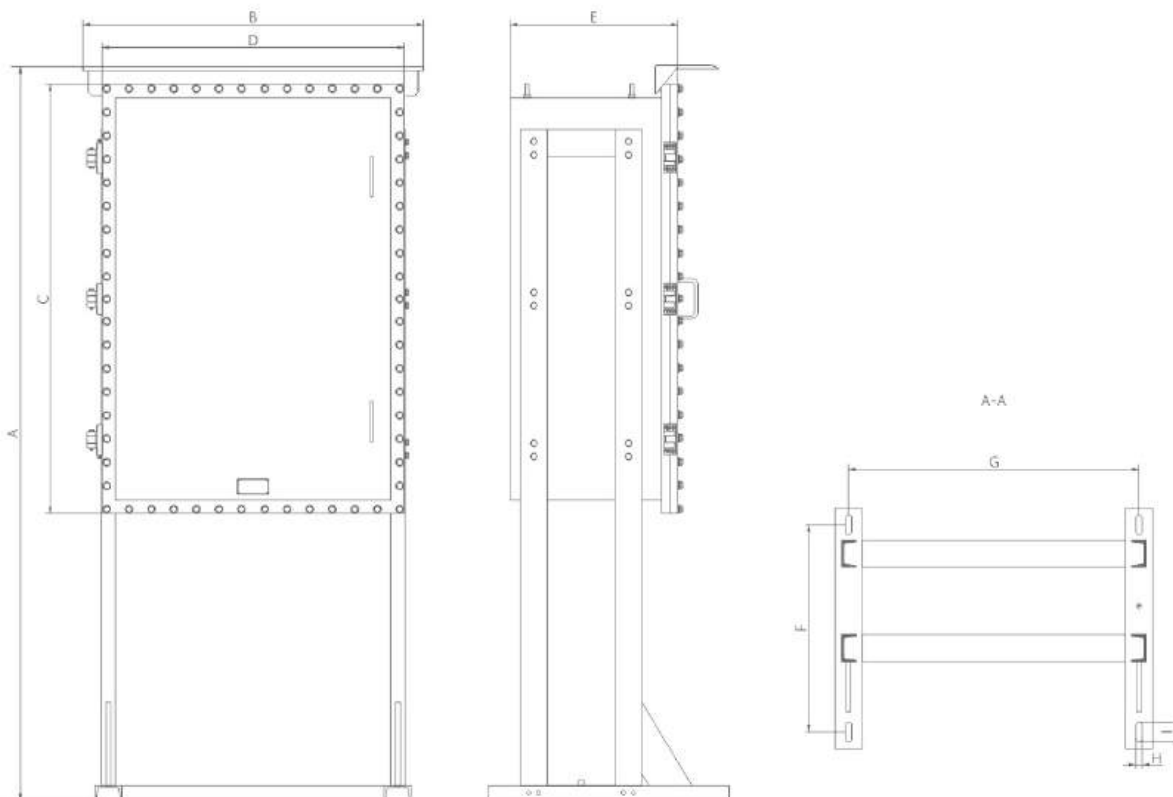
FORM OF MAXIMUM POWER DISSIPATION AND TEMPERATURE RISE

Ta=60°C	T5/T95°C	T6/T80°C
Type	Power consumption (W)	Power consumption (W)
BXJ92-I	371	180
BXJ92-II	575	279

DIMENSION DRAWINGS



Version	External dimension			Mounting dimension			
	A	B	C	D	E	F	G
BXJ92-IA/□/□	980	720	425	600	800	720	12
BXJ92-IIA/□/□	1280	900	500	1030	1060	900	12



Version	External dimension					Mounting dimension			
	A	B	C	D	E	F	G	H	I
BXJ92-IB/□/□	1945	840	980	720	425	550	686	60	20
BXJ92-IIB/□/□	2195	1015	1280	900	500	617	866	60	20

HRMD95 Series

Explosion-proof Distribution Panels

Applicable area

Zones 1 & 2; 21 & 22

Explosion-proof certificate

IECEx: applied for

ATEX: applied for

Enclosure material

Copper-free Aluminium Alloy, powder coated surface, window grey (RAL7040)

Built-in components

Ammeters voltmeters, power meters, tachometers temperature control meters and other meters, control switches, disconnecting switches, Moulded Case Circuit Breakers (MCCB), Miniature Circuit Breakers(MCB), AC contactors, thermal relays, intermediate relays, time relays, control transformers, DC power supplies, current transformers, surge protectors, PLCs, fuses, soft starters, frequency converters, terminals, bus bars, resistors, light-operated switches, time controllers, optical fiber control boxes, magnet valves, analytical instruments, heaters, self-regulation trace heating cables, display screens, magnetic ballasts of HID light sources, electronic ballasts of fluorescent lamps, drivers of LED light sources, emergency devices of HID light sources, emergency devices of fluorescent lamps, emergency devices of LED light sources, safety barriers, integrated protectors of motors, lighting building controllers, lighting energy saving controllers, fire monitoring controllers, temperature controllers, humidity controllers, current monitors, voltage monitors, motor protection switches, dual power transfer switches, counters, timers, solid state relays, diode modules, industrial personal computers, UPS, batteries.

Entry direction

Bottom

Exposed fastener

Stainless steel

Internal & external earthing

M8/M8

Ambient temperature

-60°C~+60°C

PRODUCT SELECTION

Rated current	Rated voltage	Ex-mark	Degree of protection
Max. 1200A	Max. 1000V AC 50/60Hz Max. 1500V DC	Ex db IIB+H ₂ T□ ^o Gb Ex db [ib] IIB+H ₂ T□ ^o Gb Ex tb IIIC T□ ^o Db IP66 ⊕ II 2 G Ex db IIB+H ₂ T□ ^o Gb ⊕ II 2 G Ex db [ib] IIB+H ₂ T□ ^o Gb ⊕ II 2 D Ex tb IIIC T□ ^o Db IP66	IP66



The large space of the enclosure makes it easy for wire assembling.



Adopting high-precision machining, excellent explosion-proof performance.



Professionally designed door handles, reliable and safe when opening the door.



Professionally designed hinges, reliable and safe when opening the door.

Cable entries

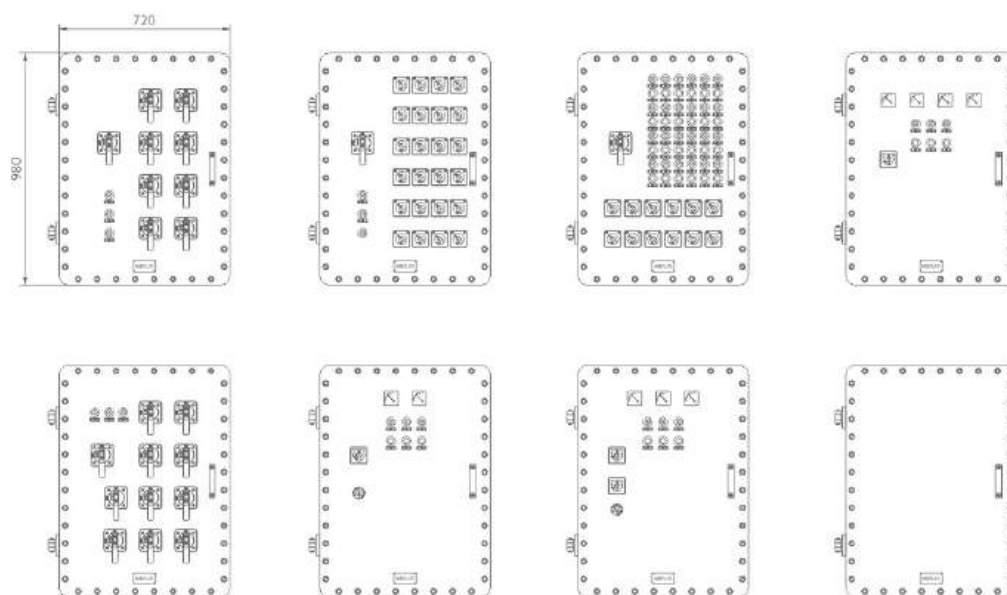
Standard M□ x 1.5 plug (the size of entry hole should be processed in accordance with actual requirements), NPT □ plug on request.

Mounting

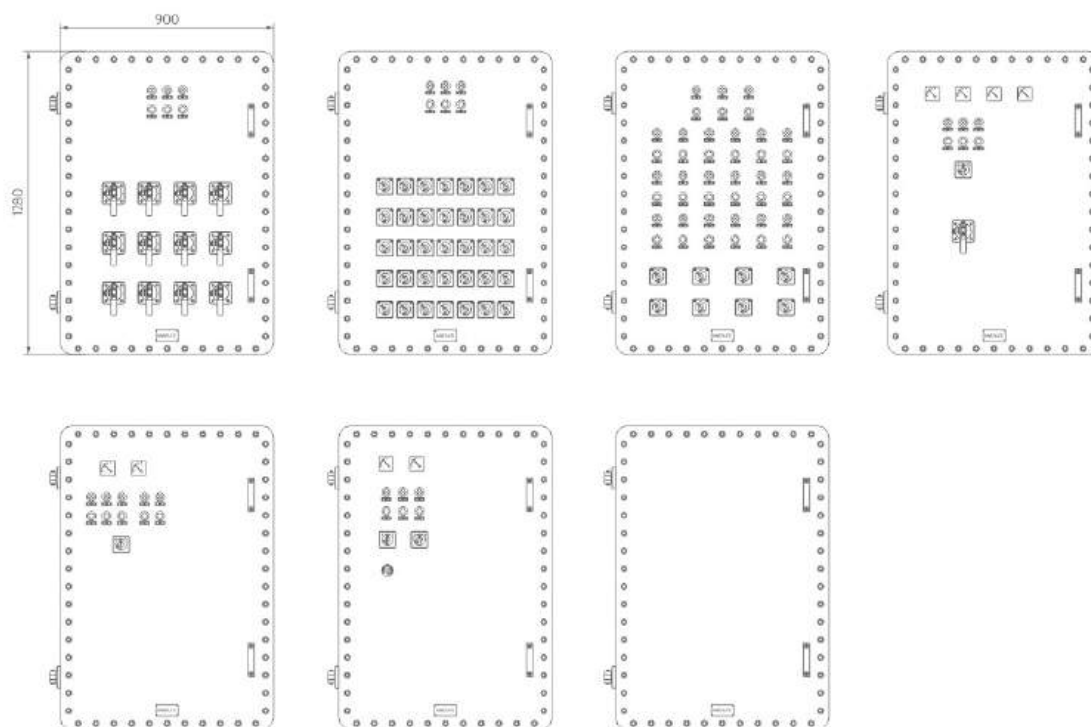
Surface type (standard)

Free-standing type (optional)

TYPICAL SCHEME DIAGRAM



HRMD95-VIIIB(720×980×425)



HRMD95-IXB(900×1280×500)

BX-e Series

Empty Enclosure (Ex eb IIC)

Applicable area
Zones 1 & 2; 21 & 22

Explosion-proof certificate

IECEX: IECEX CQM 24.0010U

ATEX: applied for

Enclosure material

Stainless steel or carbon steel

Service temperature

-60°C~+110°C

Exposed fastener

Stainless steel

Cable entries

Cable entries can be drilled and components can be installed by user on request.

Internal & external earthing

M6/M8/M10

Installation type

II. carbon steel, III. stainless steel

Mounting

Surface type, free-standing type

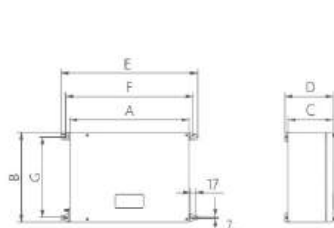


PRODUCT SELECTION

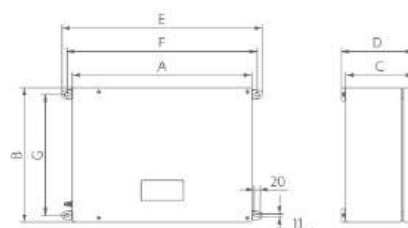
Ex-mark	Degree of protection
Ex eb IIC Gb Ex tb IIIC Db Ⓜ II 2 G Ex eb IIC Gb Ⓜ II 2 D Ex tb IIIC Db	IP66

DIMENSION DRAWINGS

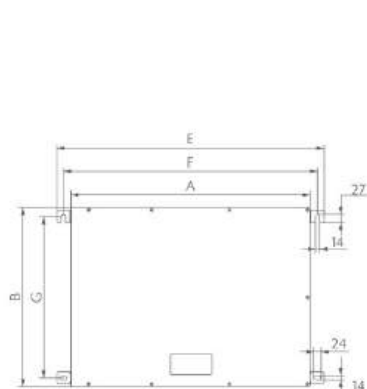
Surface type



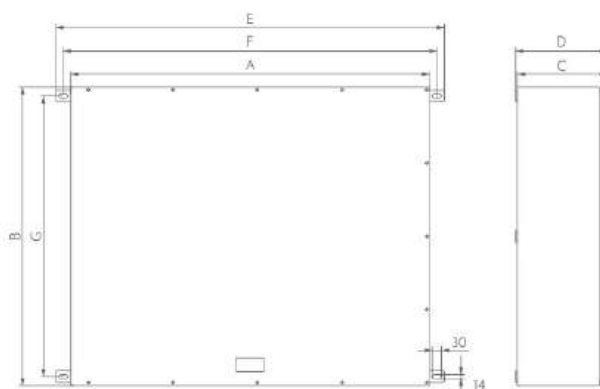
BX-e/II(III) 001-013



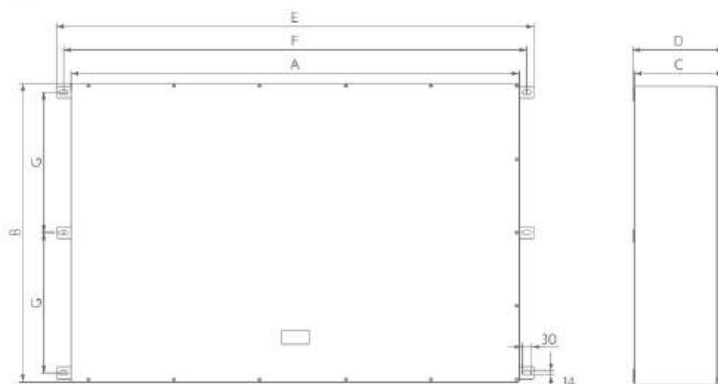
BX-e/II(III) 014-019



BX-e/II(III) 020-022



BX-e/II(III) 023



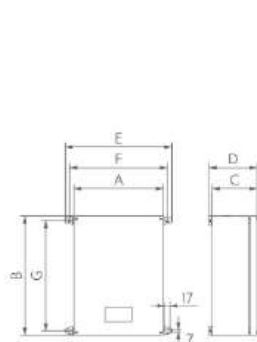
BX-e/II(III) 024

Model specifications	External dimensions	D	E	Installation dimensions	Model specifications	External dimensions	D	E	Installation dimensions
	A×B×C			F×G		A×B×C			F×G
BX-e/II(III) 001	170×150×110	120	228	198×120	BX-e/II(III) 013	360×360×165	175	418	388×330
BX-e/II(III) 002	220×180×110	120	278	248×150	BX-e/II(III) 014	500×400×200	210	570	536×366
BX-e/II(III) 003	300×200×110	120	358	328×170	BX-e/II(III) 015	500×400×300	310	570	436×466
BX-e/II(III) 004	300×200×125	135	358	328×170	BX-e/II(III) 016	480×480×150	160	550	516×446
BX-e/II(III) 005	360×220×125	135	418	388×190	BX-e/II(III) 017	480×480×250	260	550	516×446
BX-e/II(III) 006	360×220×165	175	418	388×190	BX-e/II(III) 018	600×500×200	210	670	636×466
BX-e/II(III) 007	250×250×150	160	308	278×220	BX-e/II(III) 019	600×500×300	310	670	636×466
BX-e/II(III) 008	300×300×150	160	358	328×270	BX-e/II(III) 020	800×600×200	218	894	850×540
BX-e/II(III) 009	300×300×200	210	358	328×270	BX-e/II(III) 021	800×600×300	318	894	850×640
BX-e/II(III) 010	300×400×150	160	358	328×370	BX-e/II(III) 022	1000×800×300	318	1094	1050×740
BX-e/II(III) 011	300×400×200	210	358	328×370	BX-e/II(III) 023	1200×1000×300	306	1300	1250×940
BX-e/II(III) 012	360×360×125	135	418	388×330	BX-e/II(III) 024	1500×1000×400	406	1600	1550×(470+470)

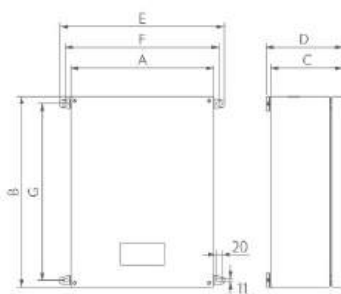
BX-e Series Empty Enclosure (Ex eb IIC)

DIMENSION DRAWINGS

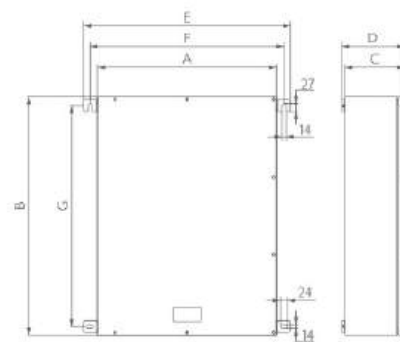
Surface type



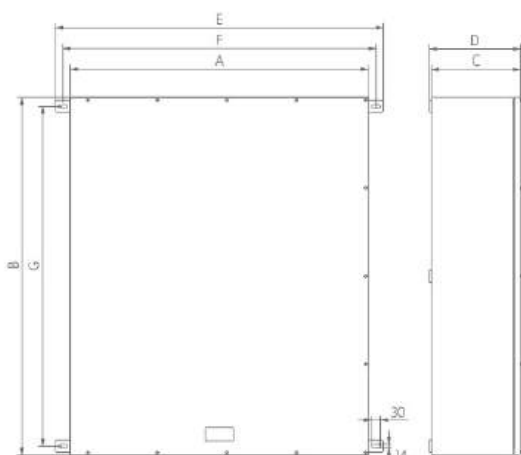
BX-e/II(III) 001-013



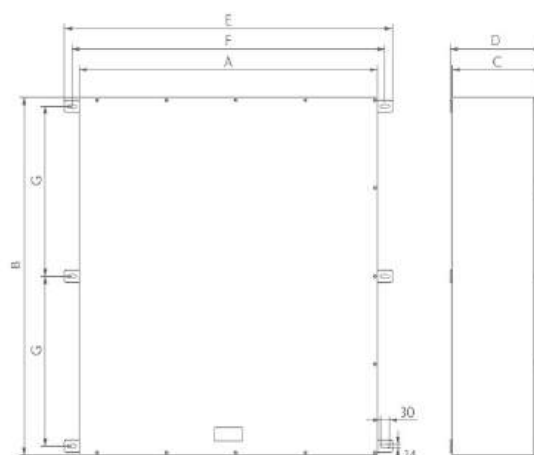
BX-e/II(III) 014-019



BX-e/II(III) 020-022



BX-e/II(III) 023



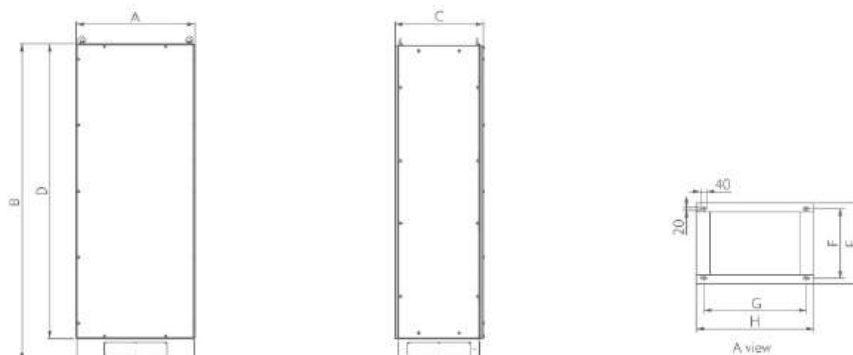
BX-e/II(III) 024

Model specifications	External dimensions	D	E	Installation dimensions	Model specifications	External dimensions	D	E	Installation dimensions
	A×B×C			F×G		A×B×C			F×G
BX-e/II(III) 001	150×170×110	120	208	178×140	BX-e/II(III) 013	360×360×165	175	418	388×330
BX-e/II(III) 002	180×220×110	120	238	208×190	BX-e/II(III) 014	400×500×200	210	470	436×466
BX-e/II(III) 003	200×300×110	120	258	228×270	BX-e/II(III) 015	400×500×300	310	470	436×466
BX-e/II(III) 004	200×300×125	135	258	228×270	BX-e/II(III) 016	480×480×150	160	550	516×446
BX-e/II(III) 005	220×360×125	135	278	248×330	BX-e/II(III) 017	480×480×250	260	550	516×446
BX-e/II(III) 006	220×360×165	175	278	248×330	BX-e/II(III) 018	500×600×200	210	570	536×566
BX-e/II(III) 007	250×250×150	160	308	278×220	BX-e/II(III) 019	500×600×300	310	570	536×566
BX-e/II(III) 008	300×300×150	160	358	328×270	BX-e/II(III) 020	600×800×200	218	694	650×740
BX-e/II(III) 009	300×300×200	210	358	328×270	BX-e/II(III) 021	600×800×300	318	694	650×740
BX-e/II(III) 010	300×400×150	160	358	328×370	BX-e/II(III) 022	800×1000×300	318	894	850×940
BX-e/II(III) 011	300×400×200	210	358	328×370	BX-e/II(III) 023	1000×1200×300	306	1100	1050×1140
BX-e/II(III) 012	360×360×125	135	418	388×330	BX-e/II(III) 024	1000×1500×400	406	1100	1050×(720+720)

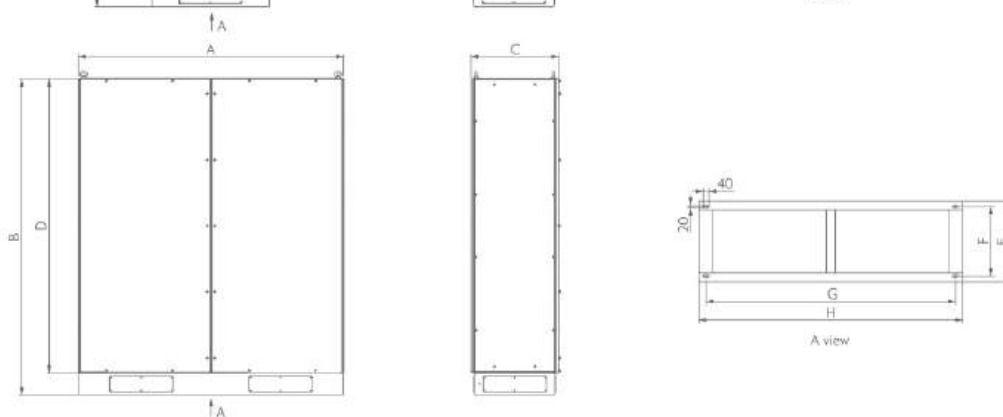
DIMENSION DRAWINGS

Pedestal type

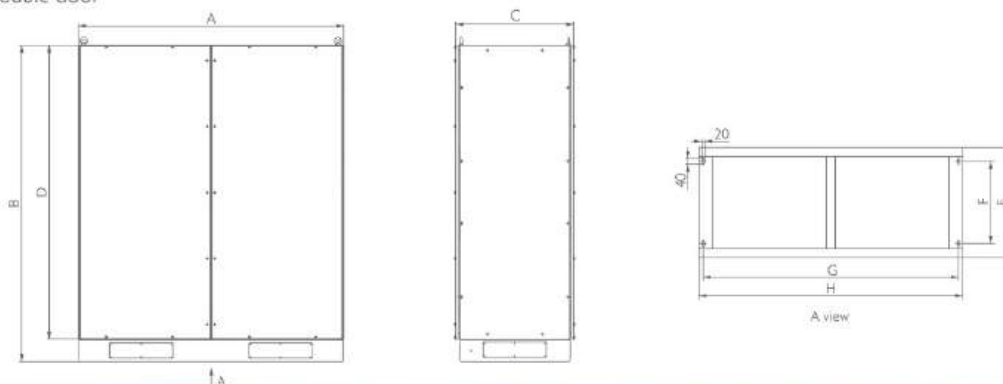
1. Single door



2. Double door



3. Front and rear double door



Model and Specifications	Dimensions A×B×C	Base Dimensions E×H	Base Mounting Dimensions G×F	Cabinet Height D	Note
BX-e/II(III) 025	600×1800×400	600×350	500×274	2010	Single door
BX-e/II(III) 026	800×1800×400	800×350	700×274	2010	
BX-e/II(III) 027	800×2000×400	800×350	700×274	2210	
BX-e/II(III) 028	800×2000×600	800×550	700×474	2210	
BX-e/II(III) 029	1000×2000×600	1000×550	920×474	2210	Double door
BX-e/II(III) 030	1000×1800×400	1000×350	900×274	2010	
BX-e/II(III) 031	1200×1800×400	1200×350	1100×274	2010	
BX-e/II(III) 032	1600×1800×400	1600×350	1500×274	2010	
BX-e/II(III) 033	1200×2000×400	1200×350	1100×274	2210	
BX-e/II(III) 034	1200×2000×600	1200×550	1100×474	2210	
BX-e/II(III) 035	1800×2000×600	1800×550	1700×474	2210	Front and rear double door
BX-e/II(III) 036	1200×2000×800	1200×750	1140×560	2210	
BX-e/II(III) 037	1800×2000×800	1800×750	1740×560	2210	

BXT-□-W Series

Explosion-proof Enclosures (Ex db IIB+H₂)

Applicable area

Zones 1 & 2; 21 & 22

Explosion-proof certificate

IECEx: applied for

ATEX: applied for

Enclosure material

Copper-free Aluminium Alloy, powder coated surface, window grey (RAL7040)

Exposed fastener

Stainless steel

Internal & external earthing

M8/M8

Service temperature

-60°C~+200°C



Professionally designed explosion-proof large enclosure provides space for more components.



Adopting high-precision machining, excellent explosion-proof performance.



Professionally designed door handles, reliable and safe when opening the door.



Professionally designed hinges, reliable and safe when opening the door.

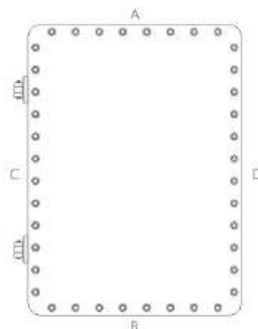
PRODUCT SELECTION

Type	Dimensions	Ex-mark	Degree of protection
BXT-VIIIB-W	980×720×425	Ex db IIB+H ₂ Gb Ex tb IIIC Db IP66	IP66
BXT-IXB-W	1280×900×500	Ex II 2 G Ex db IIB+H ₂ Gb Ex II 2 D Ex tb IIIC Db	

DIMENSION DRAWINGS

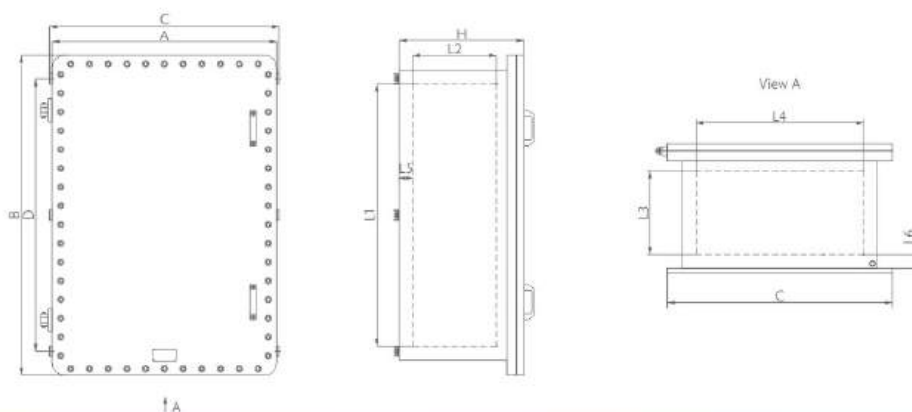
BXT-VIIIB, IXB-W

Table of max. number of possible enclosure entries



Type	A/B side		C/D side		Thread spec.
	Hole QTY	Hole distance range(mm)	Hole QTY	Hole distance range(mm)	
BXT-VIIIB-W	28	60-70	44	60-70	NPT 1/2", M20x1.5, NPT 3/4", M25x1.5
	18	80-90	24	80-90	NPT1", M32x1.5, NPT1 1/4", M40x1.5
	8	110-120	12	110-120	NPT1 1/2", M50x1.5, NPT2", M63x1.5
	3	230-240	4	230-240	NPT2 1/2", M75x1.5
	2	230-240	3	230-240	NPT3", M90x1.5
	2	230-240	3	230-240	NPT4", M115x1.5
BXT-IXB-W	45	60-70	70	60-70	NPT 1/2", M20x1.5, NPT 3/4", M25x1.5
	24	80-90	32	80-90	NPT1", M32x1.5, NPT1 1/4", M40x1.5
	15	110-120	24	110-120	NPT1 1/2", M50x1.5, NPT2", M63x1.5
	3	230-240	5	230-240	NPT2 1/2", M75x1.5
	3	230-240	4	230-240	NPT3", M90x1.5
	2	230-240	4	230-240	NPT4", M115x1.5

The profile and dimensions of the empty enclosure and the machinable range of its processing surface



Type	A (mm)	B (mm)	C (mm)	D (mm)	H (mm)	L1 (mm)	L2 (mm)	L3 (mm)	L4 (mm)	L5 (mm)	L6 (mm)
BXT-VIIIB-W	720	980	750	830	425	800	270	270	540	55	55
BXT-IXB-W	900	1280	900	1080	500	1050	330	330	670	55	55

BA8060 Series

Control Buttons

Applicable area

Zones 1 & 2

Explosion-proof certificate

IECEX: IECEX CQM 24.0016U

ATEX: applied for

Enclosure material

PA66

Button material

PA66

Ambient temperature

-60°C~+90°C

Contact material

Silver-plated copper

Terminal

1-2.5mm²

Spring-return control button

Spring-return control button

Mushroom stay-put emergency control button

Self-latching when pulled, self-locking

Key-operated control button

Rotate to lock; release with key, key movable in both ways

Rotary control button

Two-position switch function, key movable in 90°



Two-wire interface, can be paralleled, the maximum wire diameter is 2.5mm².

Double control button

Spring-return control button, 1 control button element has the function of 2 control buttons

Mushroom turn-to-release emergency control button

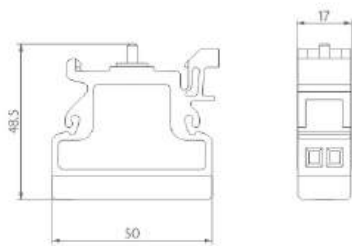
Rotary resetting control button: self-locking

PRODUCT SELECTION

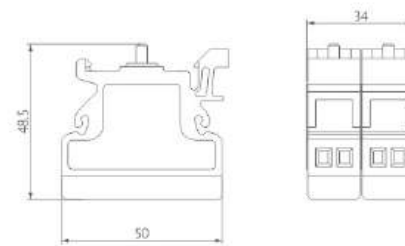
Rated parameters	Ex-mark	Mechanical life	Electrical life
U: AC 500V I:10A; AC15: Ue 480V/Ie 2.5A; Ue 240V/Ie 5A DC13: Ue 240V/Ie 0.5A; Ue 24V/Ie 5A	Ex db eb IIC Gb	10 ⁶ times	10 ⁶ times

DIMENSION DRAWINGS

Schematic diagram of the top-mounted button core

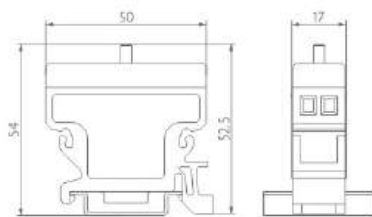


Single set of button cores

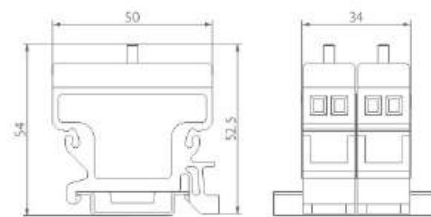


Double sets of button cores

Schematic diagram of the bottom-mounted button core

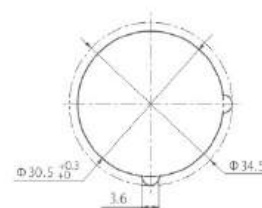
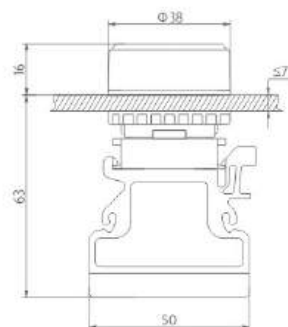


Single set of button cores



Double sets of button cores

Schematic diagram of the top-mounted combination



Shell cover opening size

BD8060 Series

Indicators

Applicable area

Zones 1 & 2

Explosion-proof certificate

IECEX: IECEX CQM 24.0019U

ATEX: applied for

Enclosure material

PA66

Indicators cover material

PC

Ambient temperature

-60°C~+90°C

Rated current

Max.15mA

Frequency

0Hz...60Hz

Rated output wattage

Max.3W

Service life

10⁵ hours

Terminal

1-2.5mm²



Two-wire interface, can be paralleled, the maximum wire diameter is 2.5mm².



High power, high brightness, even and harmonious.

PRODUCT SELECTION

Rated voltage	Ex-mark	Colour
AC/DC12V-36V, AC/DC48V-125V, DC220V-250V, AC220V-440V	Ex db eb IIC Gb	Red, green, yellow, blue, white

DIMENSION DRAWINGS

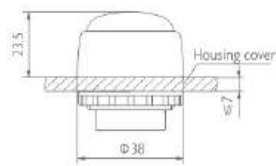
Type



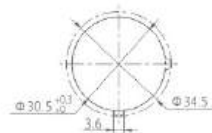
Bottom mounting



Top mounting



Schematic diagram of lampshade assembly



Shell cover opening size

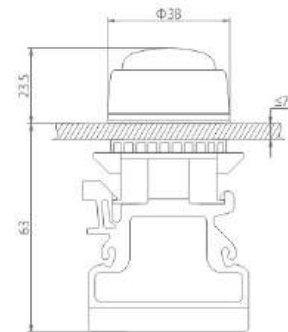
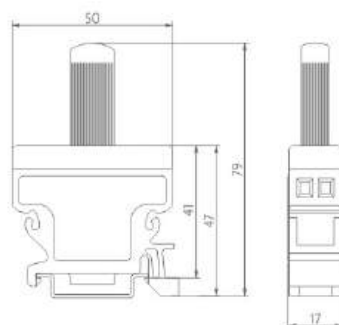
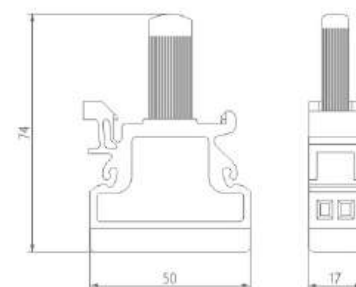


Diagram of top mounting



Profile of indicator light



Profile of indicator light

Example of
the profile
and
installation
dimensions

HRS606 Series

Explosion-proof Tablet

Applicable area

Zones 1 & 2

Product overview

This product is a professional explosion-proof tablet with waterproof, compression-resistant, drop-resistant structural design, and with the built-in barometric pressure sensor, e-compass, NFC and other sensors, safety and security for work and travel is greatly increased.

Scope of application

Used in:

- ◇ Dangerous environments such as oil exploitation, oil refining, chemical industry, military industry, offshore oil platforms, oil tankers, etc.;
- ◇ Explosive atmospheres IIA, IIB, IIC, Zone 1, Zone 2 locations;
- ◇ Ambient temperature -40°C~+60°C;
- ◇ Atmospheric pressure: 80KPa-106KPa;
- ◇ Without significant oscillation and shock vibration;
- ◇ With no gases or vapors that invalidate the insulation.

Confronting Any Challenges

A variety of technical guarantees for security , to provide safe and stable communication services in dangerous environments such as flammable and explosive gases.

Easily cope with all kinds of harsh and extreme environments such as special operations, outdoor exploration, extreme sports or emergency rescue.



Indestructible Quality

In order to push the quality of products to the limit, we conduct rigorous physical tests.

Its functionality and performance have also been comprehensively evaluated.

It is able to withstand the harshest conditions and deliver reliable performance in demanding environments.

NFC Seamless Business Operations

NFC-enabled products enhance business mobility and connectivity.

Verify employee IDs and scan barcodes to make your business truly mobile and linked.

PRODUCT FEATURES



MAIN TECHNICAL SPECIFICATIONS

Ex-mark	Ex ib IIC T4 Gb
Processor	8 x MT8781 2.2GHz
Operating system	Android 13
Cellular models	GSM/WCDMA/CDMA/TDD-LTE/FDD-LTE
Frequency bands	GSM: B2/3/5/8 WCDMA: B1/2/4/5/6/8/19 CDMA: BC0/BC1/BC10 FDD-LTE: B1/2/3/4/5/7/8/12/13/17/18/19/20/25/26/28A/28B/66 TDD-LTE: B34/38/39/40/41
SIM card	SIM card, Nano SIM card, T card; hot-pluggable, dual standby
Display	11 inch FHD with IPS 1200*2000
Camera	Front camera 1600W pixels, rear camera 4800W pixels with one flashing light
Face ID	Provided
RAM+Data memory	8GB+256GB; TF could be extended to 256GB(Max. 2 TB)
Battery	Lithium-polymer battery (4.4V high voltage cell)
Dimensions	277.8x178x14mm
Weight	1008g
Color	Black+yellow
Degree of protection	IP68
Touchscreen	Capacitive 10 points touch screen, can be operated with gloves and stylus
Speakers	1326 dual box speakers
Microphone	Silicon microphone
Charging	Type-C USB 2.0
Bluetooth	BT 5.2
WLAN	WIFI(2.4G/5G)/WIFI 6
GPS sensor	GPS+GLONASS+BDS+Galileo
Sensor	Light sensor, acceleration sensor, gravity sensor, gyroscope, geomagnetic sensor, barometric pressure sensor, electricity meter, pedometer
Touch ID	Provided
OTG connect	Provided
FM transmission	Provided
POC cellular	Global POC public network intercom, Fast and convenient communication in distance (single call, group call, broadcast, one call and multiple responses) POC public network intercom, preset POC key for public network intercom

HRSP Series

Retractable Pole With Ex LED Lighting

Applications

For light fittings which Installed on industrial walkways, platforms, stairways.
Hazardous and harsh environments subject to corrosive agents, vibration and extreme temperatures.
Widely used in oil & gas, chemical, wharf, food, pharmacy, military, and other factories/warehouse.

Product specifications

Retractable type
Sealed and pre-wired at factory
Install height: Adjustable

Standard materials

Carbon steel - ISO Fe360D
Hot dip galvanized - BS EN ISO 1461
Stainless steel - 316 or 304 grade

Hardware

U-bolt stainless steel(optional)

Material

Q-Galvanized steel, G-Stainless steel

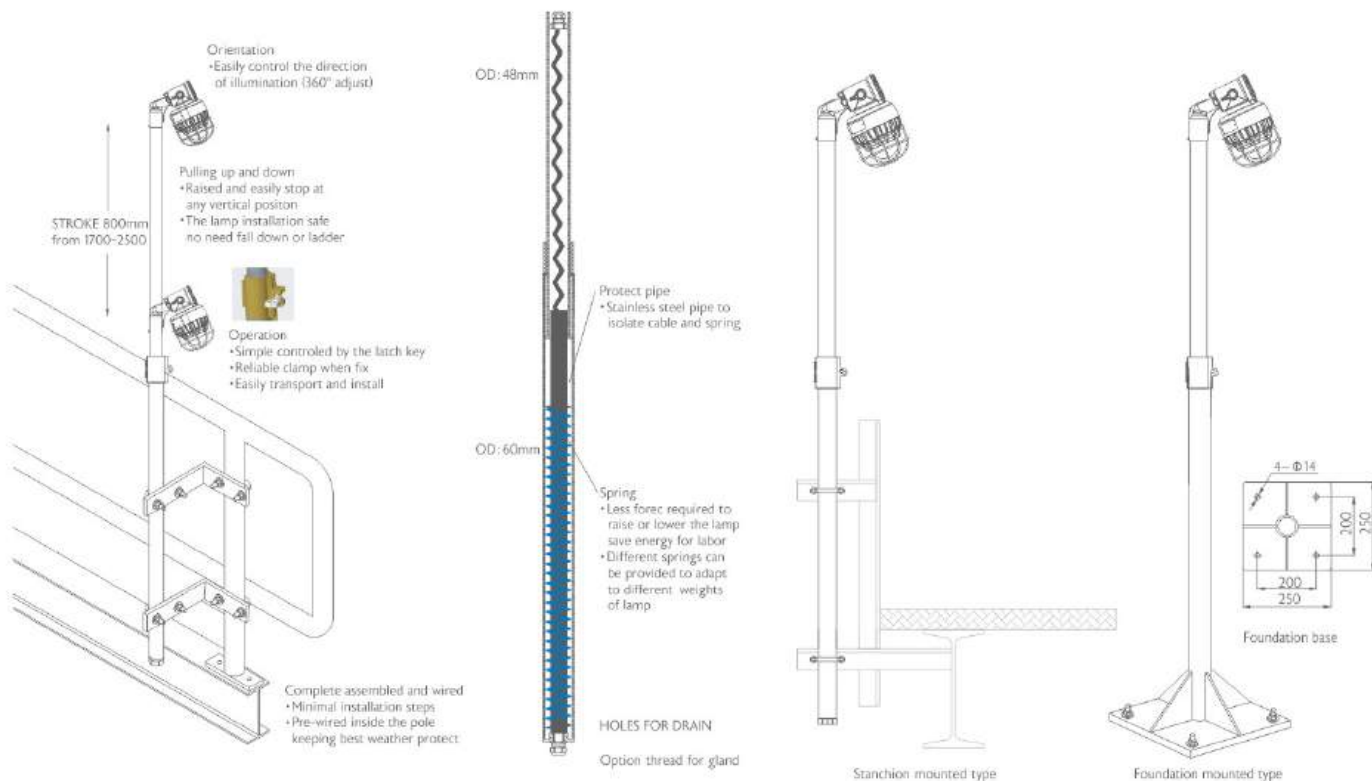
Service conditions

Wind rated up to 45m/s(continue 3s)
Relative humidity: 95%

Mounting

H: Handrail stanchion, B: Base type

INSTALLATION TYPE



INSTALLATION

Step 1: Check the appearance of the pole, lock the latch key. Check the reserved cable length is sufficient for wiring.

Step 2: Check key parameters listed on the nameplate of the lighting are applicable in the field environment.

Step 3: Remove the cover of lighting.

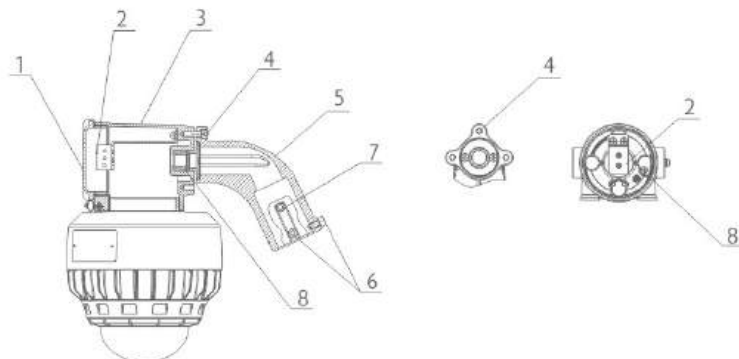
Step 4: Thread the cable through elbow & the sealing ring. Connect the power cable to the internal terminals.

Step 5: Fix the elbow & lighting with three M6 bolts.

Step 6: Insert the pole to the elbow, secure them using two fastening screws.

Step 7(1): Erect the pole, fix the pole to the handrail with the U-blot.

Step 7(2): Erect the pole, fix the pole to the ground with the anchor bolt.



No.	NAME	Qty.
1	Cover with gasket	1
2	Terminals	1
3	Shell for termination	1
4	Fixing screws	3
5	Elbow for pole type connect	1
6	Fastening screws	2
7	Earth bolt	1
8	Sealing ring	1

MAINTENANCE

Step 1: Check the power supply to lighting is OFF.

Step 2: Check there is no other elements which possible interference the pole.

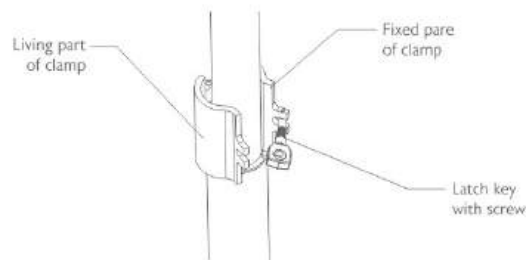
Step 3: Unscrew the captive latch key, open the living part of the clamp.

Step 4: Lower the pole to the lowest point, close the clamp and lock the key.

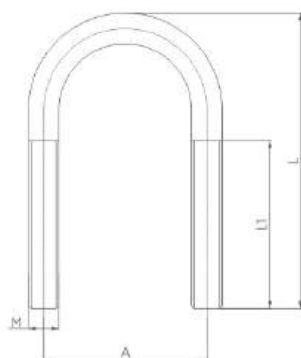
Step 5: Open the cover of lighting, check if the power cable connected normally.

Step 6: Dis-connect the power cable, release the screw from elbow, remove the lighting from pole.

Step 7: Check internal components to determine the fault point.



U-BOLT DETAILS



Size	A(mm)	R(mm)	M	L(mm)	L1(mm)	Remark
G1"(34)	38	16	M6	68	38	SS304/SS316/SS316L
G1 1/4"(42)	50	21	M8	80	35	SS304/SS316/SS316L
G1 1/2"(48)	56	24	M8	90	40	SS304/SS316/SS316L
G2"(60)	68	30	M8	105	45	SS304/SS316/SS316L

Note: Other size or special requirement on request.